

CATALOGUE NO. 8635.6  
EMBARGOED UNTIL 11.30 A.M. 20 JUNE 1995

**TOURIST ACCOMMODATION, TASMANIA, MARCH QUARTER 1995**

\*\*\*\*\*

**MAIN FEATURES**

MARCH QUARTER 1995  
COMPARED WITH  
MARCH QUARTER 1994

**HOTELS, MOTELS AND GUEST HOUSES**

- Rooms available increased by 0.9 per cent to 5,380 while room nights occupied increased by 3.9 per cent from 318,025 to 330,306.
- The room occupancy rate rose from 66.2 per cent to 68.2 per cent.
- Guest nights increased by 2.3 per cent to 603,267 and the bed occupancy rate increased from 41.9 per cent to 42.7 per cent.
- Guest arrivals at hotels, motels and guest houses increased by 5.1 per cent to 340,097 while average length of stay remained at 1.8 days.
- Takings from accommodation increased by 9.4 per cent to \$25.0m. Average takings per room night occupied increased from \$72 to \$76.

**HOLIDAY FLATS, UNITS AND HOUSES**

- The number of units, etc. available for short-term letting increased by 8.8 per cent to 867 while unit nights occupied increased by 12.9 per cent to 56,752.
- The unit occupancy rate increased from 70.1 per cent to 72.7 per cent.
- Unit lettings increased by 12.3 per cent while average length of stay remained at 2.2 days.
- Accommodation takings increased by 17.9 per cent to \$4.4m. Average takings per unit night occupied increased from \$74 to \$77.

**CARAVAN PARKS**

- Capacity available increased by 1.8 per cent to 6,834 sites and cabins, etc. while site nights occupied increased by 9.6 per cent from 220,229 to 241,344.
- The site occupancy rate increased by 2.8 percentage points to 39.2 per cent.
- Long-term residents occupied 470 sites, etc. (6.9 per cent) while 1,038 sites (15.2 per cent) were permanently reserved but only casually occupied by their tenants and an average of 1,174 sites (17.2 per cent) were occupied by other short-term guests.
- Accommodation takings increased by 11.2 per cent to \$2.89m.

**VISITOR HOSTELS**

- Bed spaces available increased by 20.1 per cent from 1,487 to 1,786.
- Guest nights sold increased from 35,706 to 46,606 and the bed occupancy rate increased from 26.7 per cent to 29.0 per cent.
- Guest arrivals increased from 24,992 to 28,328 while average length of stay increased from 1.4 days to 1.6 days.
- Accommodation takings increased from \$0.41m to \$0.55m while average takings per guest night increased from \$11 to \$12.

**PASSENGER ARRIVALS**

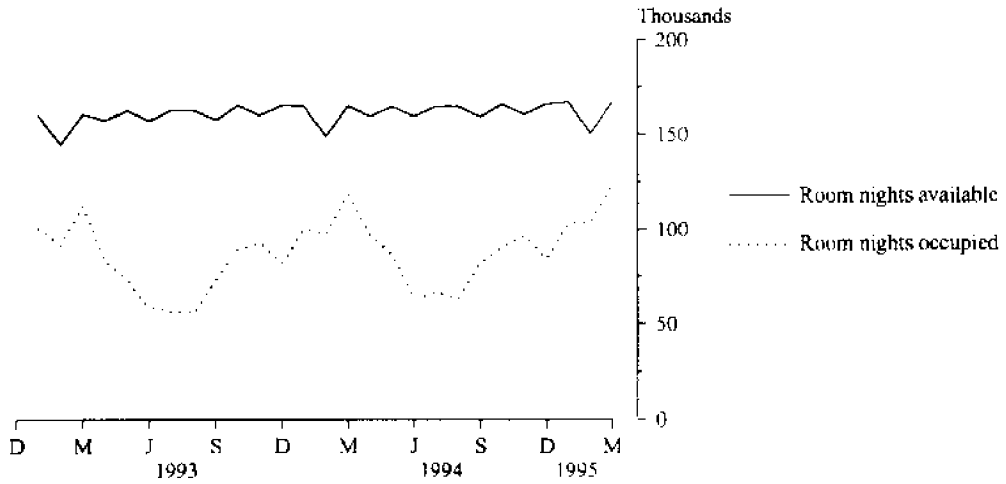
- Total arrivals into Tasmania by air and sea for the March quarter 1995 totalled 266,467 which was a 9.6 per cent increase on the March quarter 1994 figure of 243,038.

\*\*\*\*\*

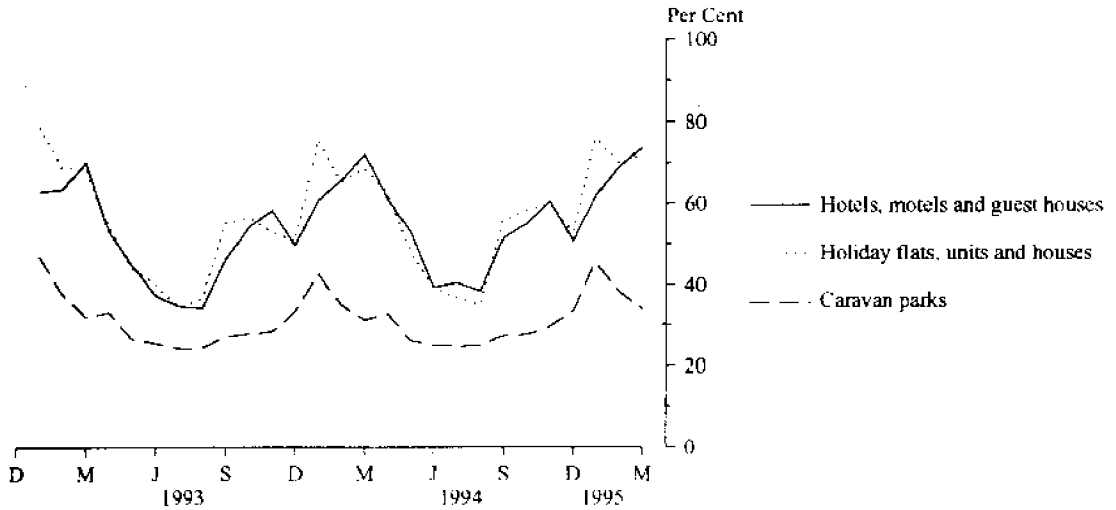
**INQUIRIES**

- *For inquiries concerning these statistics and the availability of related unpublished statistics, contact Greg McNamara on Brisbane 008 077285 or any ABS office.*
  - *For other inquiries including copies of publications, telephone the Information Officer on Hobart (002) 20 5800.*
  - *The Tasmanian Office of the Bureau is located on the ground floor, 175 Collins Street, Hobart (GPO Box 66A, Hobart 7001).*
- \*\*\*\*\*

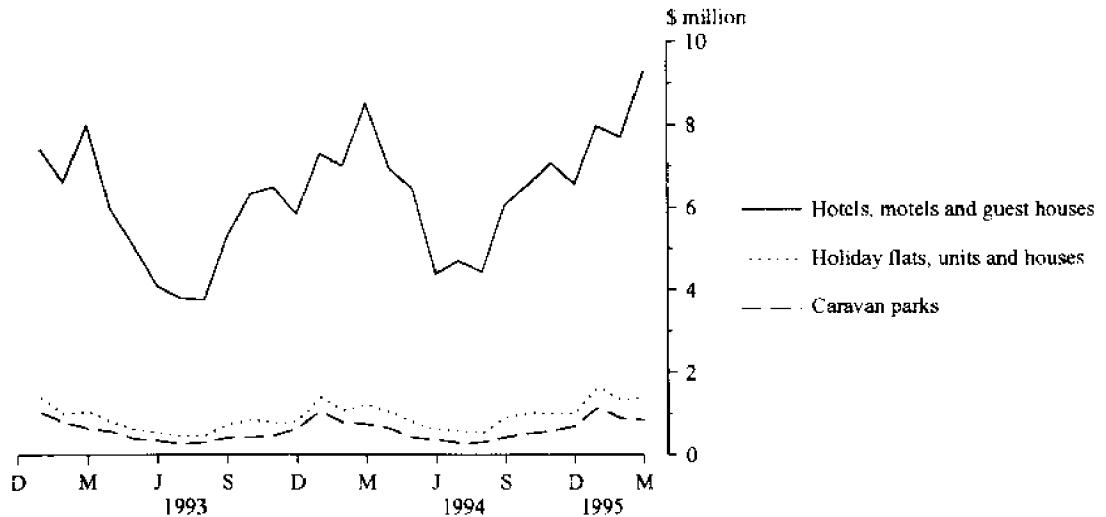
**MONTHLY ROOM NIGHTS AVAILABLE AND OCCUPIED:  
HOTELS, MOTELS AND GUEST HOUSES,  
TASMANIA**



**MONTHLY OCCUPANCY RATES,  
TASMANIA**



**MONTHLY TAKINGS FROM ACCOMMODATION,  
TASMANIA**



## CONTENTS

<i>Table</i>	<i>Page</i>
" Main features	1
" Diagrams	2
1 Summary of hotels, motels and guest houses with facilities, Tasmania	4
2 Summary of caravan parks, Tasmania	5
3 Summary of holiday flats, units and houses, Tasmania	6
4 Summary of visitor hostels, Tasmania	6
5 Room nights, unit nights and site nights occupied: Seasonally adjusted and trend estimates, Tasmania	7
6 Hotels, motels and guest houses with facilities by star grading, Tasmania	8
7 Hotels, motels and guest houses with facilities by establishment size, Tasmania	9
8 Hotels, motels and guest houses with facilities by statistical division, Tasmania	10
9 Hotels, motels and guest houses with facilities: Statistical divisions and selected statistical local areas, Tasmania	12
" Diagrams: Monthly room/unit occupancy rates	14
10 Holiday flats, units and houses by statistical division and selected statistical areas, Tasmania	16
11 Caravan parks by statistical division and selected statistical areas, Tasmania	17
12 Visitor hostels by statistical division, Tasmania	18
13 Passenger arrivals and departures, Tasmania, interstate and international	19
14 Total passenger arrivals by air and sea into Tasmania: Seasonally adjusted and trend estimates	20
" Explanatory Notes	21

TABLE 1 — SUMMARY OF HOTELS, MOTELS AND GUEST HOUSES WITH FACILITIES, TASMANIA (a)

Particulars	Unit	Quarter ended				Year ended			
		December 1993	March 1994	June 1994	September 1994	December 1994	March 1995	March 1994	March 1995
<b>LICENSED HOTELS WITH FACILITIES</b>									
Establishments	No.	93	92	91	91	92	91	..	..
Guest rooms	No.	3,510	3,489	3,488	3,513	3,526	3,511	..	..
Bed spaces	No.	10,044	9,993	9,961	9,856	9,921	9,908	..	..
Employment (persons)	No.	3,410	3,587	3,468	3,474	3,576	3,500	..	..
Room nights occupied	No.	175,628	205,931	163,803	145,246	177,580	209,797	653,066	696,426
Room occupancy rate	per cent	54.4	65.6	51.6	45.0	54.9	66.4	51.8	54.4
Guest nights	No.	290,835	370,707	263,797	239,577	302,266	367,621	1,114,370	1,173,261
Bed occupancy rate	per cent	31.5	41.2	29.1	26.4	33.2	41.2	30.8	32.4
Guest arrivals	No.	158,903	201,600	143,788	125,155	170,077	204,917	592,642	643,937
Average length of stay	days	1.8	1.8	1.8	1.9	1.8	1.8	1.9	1.8
Takings from accommodation	\$'000	13,366	15,769	12,660	11,109	14,188	16,898	49,447	54,856
<b>MOTELS AND GUEST HOUSES WITH FACILITIES</b>									
Establishments	No.	86	86	86	83	85	86	..	..
Guest rooms	No.	1,832	1,845	1,834	1,803	1,828	1,869	..	..
Bed spaces	No.	5,625	5,665	5,617	5,550	5,674	5,780	..	..
Employment (persons)	No.	774	754	751	747	815	856	..	..
Room nights occupied	No.	89,793	112,094	83,937	67,209	94,786	120,509	332,595	366,441
Room occupancy rate	per cent	53.3	67.5	50.4	40.6	56.4	71.6	49.5	54.8
Guest nights	No.	159,561	219,215	152,442	122,573	175,667	235,646	615,868	686,328
Bed occupancy rate	per cent	30.8	43.0	29.9	24.0	33.7	45.3	29.7	33.3
Guest arrivals	No.	90,835	121,933	86,979	69,307	105,336	135,180	346,940	396,802
Average length of stay	days	1.8	1.8	1.8	1.8	1.7	1.7	1.8	1.7
Takings from accommodation	\$'000	5,294	7,044	5,139	4,120	5,971	8,064	20,076	23,294
<b>TOTAL HOTELS, MOTELS AND GUEST HOUSES WITH FACILITIES</b>									
Establishments	No.	179	178	177	174	177	177	..	..
Guest rooms	No.	5,342	5,334	5,322	5,316	5,354	5,380	..	..
Bed spaces	No.	15,669	15,658	15,578	15,406	15,595	15,688	..	..
Employment (persons)	No.	4,184	4,341	4,219	4,221	4,391	4,356	..	..
Room nights occupied	No.	265,421	318,025	247,740	212,455	272,366	330,306	985,661	1,062,867
Room occupancy rate	per cent	54.0	66.2	51.2	43.5	55.4	68.2	51.0	54.5
Guest nights	No.	450,396	589,922	416,239	362,150	477,933	603,267	1,730,238	1,859,589
Bed occupancy rate	per cent	31.2	41.9	29.4	25.6	33.3	42.7	30.4	32.7
Guest arrivals	No.	249,738	323,533	230,767	194,462	275,413	340,097	939,582	1,040,739
Average length of stay	days	1.8	1.8	1.8	1.9	1.7	1.8	1.8	1.8
Takings from accommodation	\$'000	18,661	22,812	17,799	15,229	20,159	24,963	69,523	78,149

(a) From December quarter 1993, establishments with fewer than 5 rooms have been formally excluded from the scope of this collection. See Explanatory Note 2 (page 21).

TABLE 2 — SUMMARY OF CARAVAN PARKS, TASMANIA

Particulars	Unit	Quarter ended				Year ended			
		December 1993	March 1994	June 1994	September 1994	December 1994	March 1995	March 1994	March 1995
<b>SHORT-TERM CARAVAN PARKS</b>									
Establishments	No.	56	58	58	63	63	63	..	..
Capacity									
On-site vans	No.	274	284	284	269	276	272	..	..
Other powered sites	No.	2,782	2,943	2,977	3,085	3,095	3,090	..	..
Unpowered sites	No.	2,083	2,197	2,201	2,276	2,266	2,175	..	..
Cabins, etc.	No.	306	315	319	347	362	338	..	..
Total capacity	No.	5,445	5,739	5,781	5,977	5,999	5,875	..	..
Sites occupied by long-term guests	No.	210	212	229	260	273	280	..	..
Other sites permanently reserved	No.	875	858	944	979	986	1,021	..	..
Employment (persons)	No.	183	184	175	195	219	227	..	..
Site nights occupied	No.	148,173	186,782	147,146	140,206	169,002	211,504	597,130	667,858
Site occupancy rate	per cent	29.6	36.2	28.0	25.5	30.6	40.0	29.8	31.0
Takings from accommodation	\$'000	1,174	2,120	1,091	819	1,505	2,471	4,990	5,885
<b>LONG-TERM CARAVAN PARKS</b>									
Establishments	No.	12	12	12	12	12	12	..	..
Capacity									
On-site vans	No.	120	120	117	116	112	121	..	..
Other powered sites	No.	524	519	489	500	508	507	..	..
Unpowered sites	No.	240	240	225	236	238	233	..	..
Cabins, etc.	No.	96	97	96	95	96	98	..	..
Total capacity	No.	980	976	927	947	954	959	..	..
Sites occupied by long-term guests	No.	195	190	178	184	188	190	..	..
Other sites permanently reserved	No.	17	16	12	21	20	17	..	..
Employment (persons)	No.	41	43	44	37	47	43	..	..
Site nights occupied	No.	29,516	33,447	24,612	23,989	25,738	29,840	114,223	104,179
Site occupancy rate	per cent	32.7	38.1	29.2	27.5	29.3	34.6	32.3	30.1
Takings from accommodation	\$'000	415	475	344	217	313	416	1,501	1,290
<b>TOTAL CARAVAN PARKS</b>									
Establishments	No.	68	70	70	75	75	75	..	..
Capacity									
On-site vans	No.	394	404	401	385	388	393	..	..
Other powered sites	No.	3,306	3,462	3,466	3,585	3,603	3,597	..	..
Unpowered sites	No.	2,323	2,437	2,426	2,512	2,504	2,408	..	..
Cabins, etc.	No.	402	412	415	442	458	436	..	..
Total capacity	No.	6,425	6,715	6,708	6,924	6,953	6,834	..	..
Sites occupied by long-term guests	No.	405	402	407	444	461	470	..	..
Other sites permanently reserved	No.	892	874	956	1,000	1,006	1,038	..	..
Employment (persons)	No.	224	227	219	232	266	270	..	..
Site nights occupied	No.	177,689	220,229	171,758	164,195	194,740	241,344	711,353	772,037
Site occupancy rate	per cent	30.1	36.4	28.1	25.8	30.4	39.2	30.2	30.9
Takings from accommodation	\$'000	1,589	2,595	1,435	1,036	1,818	2,886	6,491	7,175

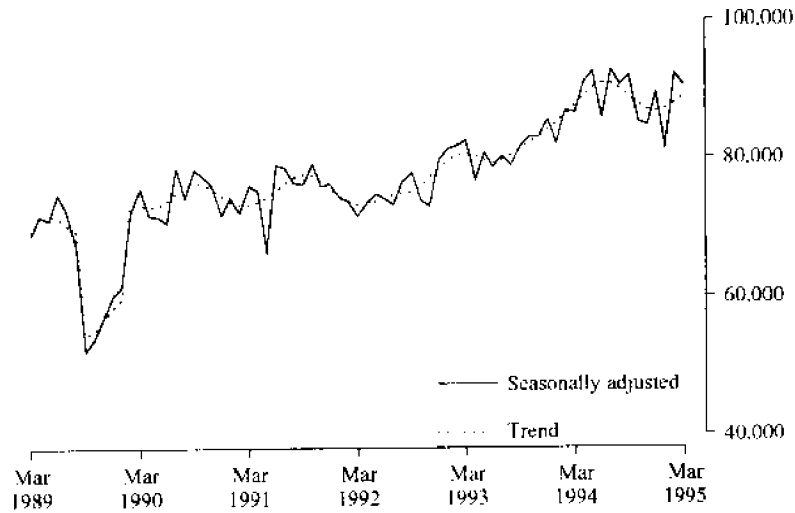
TABLE 3 — SUMMARY OF HOLIDAY FLATS, UNITS AND HOUSES, TASMANIA

Particulars	Unit	Quarter ended				Year ended			
		December 1993	March 1994	June 1994	September 1994	December 1994	March 1995	March 1994	March 1995
Letting entities	No.	50	53	52	53	52	55	..	..
Flats, units and houses	No.	257	265	260	264	265	272	..	..
Single bedroom	No.	514	532	533	540	551	595	..	..
Multiple bedroom	No.								
Total flats, units and houses	No.	771	797	793	804	816	867	..	..
Bed spaces	No.	3,366	3,511	3,486	3,533	3,578	3,761	..	..
Employment (persons)	No.	325	338	313	305	339	382	..	..
Unit nights occupied	No.	37,956	50,280	35,926	31,286	42,775	56,752	147,132	166,739
Unit occupancy rate	per cent	53.5	70.1	49.8	42.5	57.0	72.7	53.2	55.8
Unit lettings	No.	18,137	23,307	16,928	14,542	21,186	26,177	68,189	78,833
Average length of stay	days	2.1	2.2	2.1	2.2	2.0	2.2	2.2	2.1
Takings from accommodation	\$'000	2,450	3,725	2,455	2,044	3,036	4,391	9,861	11,927

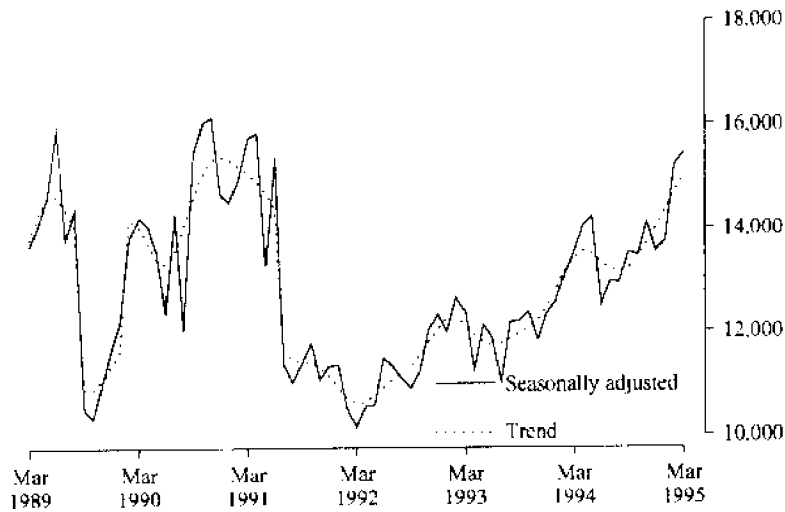
TABLE 4 — SUMMARY OF VISITOR HOSTELS, TASMANIA

Particulars	Unit	Quarter ended				Year ended			
		December 1993	March 1994	June 1994	September 1994	December 1994	March 1995	March 1994	March 1995
Establishments	No.	38	39	36	41	44	43	..	..
Bed spaces	No.	1,471	1,487	1,450	1,712	1,813	1,786	..	..
Employment (persons)	No.	94	108	90	95	112	115	..	..
Guest nights	No.	18,937	35,706	15,114	12,399	28,376	46,606	77,597	102,495
Bed occupancy rate	per cent	14.0	26.7	11.5	8.0	17.1	29.0	14.6	16.7
Guest arrivals	No.	13,418	24,992	9,441	7,518	17,106	28,328	54,289	62,393
Average length of stay	days	1.4	1.4	1.6	1.6	1.7	1.6	1.4	1.6
Takings from accommodation	\$'000	215	406	175	145	377	547	875	1,243

## HOTEL/MOTEL ROOM NIGHTS



## HOLIDAY UNIT NIGHTS



**TABLE 5. HOTEL & MOTEL ETC. ROOM NIGHTS, HOLIDAY UNIT NIGHTS AND CARAVAN PARK SITE NIGHTS: SEASONALLY ADJUSTED AND TREND ESTIMATES**

		<i>Hotel, motel etc. with facilities, room nights</i>		<i>Holiday unit nights</i>		<i>Caravan park site nights</i>		
		<i>Seasonally adjusted</i>	<i>Trend</i>	<i>Seasonally adjusted</i>	<i>Trend</i>	<i>Seasonally adjusted</i>	<i>Trend</i>	
1993	April	76,657	80,251	11,249	11,944	n.a.	n.a.	
	May	80,737	79,624	12,133	11,795	n.a.	n.a.	
	June	78,670	79,304	11,879	11,736	n.a.	n.a.	
	July	80,240	79,630	11,022	11,763	n.a.	n.a.	
	August	78,961	80,374	12,183	11,850	n.a.	n.a.	
	September	81,774	81,309	12,189	11,965	n.a.	n.a.	
	October	82,982	82,178	12,377	12,075	n.a.	n.a.	
	November	82,910	82,936	11,835	12,211	n.a.	n.a.	
	December	85,522	83,932	12,343	12,455	n.a.	n.a.	
	1994	January	82,019	85,054	12,573	12,784	n.a.	n.a.
		February	86,846	86,326	13,080	13,144	n.a.	n.a.
		March	86,570	87,638	13,540	13,437	n.a.	n.a.
April		90,936	89,005	14,041	13,558	n.a.	n.a.	
May		92,534	90,186	14,225	13,493	n.a.	n.a.	
June		85,913	90,781	12,505	13,334	n.a.	n.a.	
July		92,897	90,782	12,974	13,206	n.a.	n.a.	
August		90,625	90,052	12,927	13,161	n.a.	n.a.	
September		91,936	88,890	13,534	13,229	n.a.	n.a.	
October		85,202	87,727	13,469	13,428	n.a.	n.a.	
November		84,732	86,991	14,117	13,712	n.a.	n.a.	
December		89,479	86,776	13,550	14,010	n.a.	n.a.	
1995	January	81,409	87,180	13,729	14,336	n.a.	n.a.	
	February	92,170	87,960	15,207	14,683	n.a.	n.a.	
	March	90,464	88,842	15,452	14,993	n.a.	n.a.	

TABLE 6 — HOTELS, MOTELS AND GUEST HOUSES WITH FACILITIES BY STAR GRADING, TASMANIA

Particulars	Licensed hotels with facilities	Motels and guest houses	Star grading			Total
			1, 2 and Ungraded	3	4 and 5	
<b>ESTABLISHMENTS, CAPACITY AND EMPLOYMENT</b>						
<i>March quarter 1994—</i>						
Establishments	92	86	77	79	22	178
Guest rooms	3,489	1,845	1,421	2,464	1,449	5,334
Bed spaces	9,993	5,665	4,069	7,449	4,140	15,658
Employment (persons)	3,587	754	1,059	1,351	1,931	4,341
<i>March quarter 1995—</i>						
Establishments	91	86	72	82	23	177
Guest rooms	3,511	1,869	1,332	2,570	1,478	5,380
Bed spaces	9,908	5,780	3,761	7,669	4,258	15,688
Employment (persons)	3,500	856	970	1,337	2,049	4,356
<b>ROOM NIGHTS OCCUPIED</b>						
<i>March quarter 1994</i>	<i>205,931</i>	<i>112,094</i>	<i>72,628</i>	<i>144,092</i>	<i>101,305</i>	<i>318,025</i>
<i>1995—</i>						
January	64,298	38,786	21,152	49,189	32,743	103,084
February	66,638	37,673	20,757	50,120	33,434	104,311
March	78,861	44,050	24,304	58,578	40,029	122,911
<i>March quarter 1995</i>	<i>209,797</i>	<i>120,509</i>	<i>66,213</i>	<i>157,887</i>	<i>106,206</i>	<i>330,306</i>
<b>ROOM OCCUPANCY RATES (per cent)</b>						
<i>March quarter 1994</i>	<i>65.6</i>	<i>67.5</i>	<i>56.8</i>	<i>65.0</i>	<i>77.7</i>	<i>66.2</i>
<i>1995—</i>						
January	59.1	66.9	51.2	61.7	71.5	61.8
February	67.8	72.0	55.7	69.6	80.8	69.2
March	72.5	76.0	58.9	73.5	87.4	73.7
<i>March quarter 1995</i>	<i>66.4</i>	<i>71.6</i>	<i>55.2</i>	<i>68.3</i>	<i>79.8</i>	<i>68.2</i>
<b>GUEST NIGHTS</b>						
<i>March quarter 1994</i>	<i>370,707</i>	<i>219,215</i>	<i>139,522</i>	<i>281,552</i>	<i>168,848</i>	<i>589,922</i>
<i>1995—</i>						
January	126,297	80,595	42,665	101,861	62,366	206,892
February	110,964	72,241	37,811	92,713	52,681	183,205
March	130,360	82,810	43,493	105,619	64,058	213,170
<i>March quarter 1995</i>	<i>367,621</i>	<i>235,646</i>	<i>123,969</i>	<i>300,193</i>	<i>179,105</i>	<i>603,267</i>
<b>BED OCCUPANCY RATES (per cent)</b>						
<i>March quarter 1994</i>	<i>41.2</i>	<i>43.0</i>	<i>38.1</i>	<i>42.0</i>	<i>45.3</i>	<i>41.9</i>
<i>1995—</i>						
January	41.1	45.0	36.6	42.8	47.2	42.5
February	40.0	44.6	35.9	43.2	44.2	41.7
March	42.4	46.2	37.3	44.4	48.5	43.8
<i>March quarter 1995</i>	<i>41.2</i>	<i>45.3</i>	<i>36.6</i>	<i>43.5</i>	<i>46.7</i>	<i>42.7</i>
<b>GUEST ARRIVALS</b>						
<i>March quarter 1994</i>	<i>201,600</i>	<i>121,933</i>	<i>91,607</i>	<i>155,930</i>	<i>75,996</i>	<i>323,533</i>
<i>1995—</i>						
January	68,681	46,720	27,876	61,550	25,975	115,401
February	63,188	39,899	23,828	53,717	25,542	103,087
March	73,048	48,561	28,869	63,600	29,140	121,609
<i>March quarter 1995</i>	<i>204,917</i>	<i>135,180</i>	<i>80,573</i>	<i>178,867</i>	<i>80,657</i>	<i>340,097</i>
<b>AVERAGE LENGTH OF STAY (days)</b>						
<i>March quarter 1994</i>	<i>1.8</i>	<i>1.8</i>	<i>1.5</i>	<i>1.8</i>	<i>2.2</i>	<i>1.8</i>
<i>March quarter 1995</i>	<i>1.8</i>	<i>1.7</i>	<i>1.5</i>	<i>1.7</i>	<i>2.2</i>	<i>1.8</i>
<b>TAKINGS FROM ACCOMMODATION (\$'000)</b>						
<i>March quarter 1994</i>	<i>15,769</i>	<i>7,944</i>	<i>4,102</i>	<i>9,144</i>	<i>9,567</i>	<i>22,812</i>
<i>1995—</i>						
January	5,321	2,650	1,321	3,335	3,315	7,971
February	5,218	2,494	1,219	3,228	3,266	7,713
March	6,359	2,920	1,421	3,785	4,073	9,279
<i>March quarter 1995</i>	<i>16,898</i>	<i>8,064</i>	<i>3,961</i>	<i>10,348</i>	<i>10,654</i>	<i>24,963</i>



TABLE 7 — HOTELS, MOTELS AND GUEST HOUSES WITH FACILITIES BY ESTABLISHMENT SIZE, TASMANIA

Particulars	Establishment size (No. of rooms)						Total
	5-9	10-15	16-25	26-50	51-100	101+	
ESTABLISHMENTS, CAPACITY AND EMPLOYMENT							
<i>March quarter 1994—</i>							
Establishments	44	27	30	51	18	8	178
Guest rooms	302	705	607	1,735	1,137	1,248	5,334
Bed spaces	785	820	1,819	5,102	3,657	3,475	15,658
Employment (persons)	317	336	361	975	575	1,777	4,341
<i>March quarter 1995—</i>							
Establishments	42	28	30	50	19	8	177
Guest rooms	289	319	613	1,700	1,210	1,249	5,380
Bed spaces	744	876	1,748	5,146	3,698	3,476	15,688
Employment (persons)	236	319	411	922	662	1,806	4,356
ROOM NIGHTS OCCUPIED							
<i>March quarter 1994</i>	15,568	17,312	30,436	100,160	68,520	86,029	318,025
<i>1995</i>							
January	4,836	5,880	10,260	32,384	23,865	25,859	103,084
February	4,527	5,644	9,865	32,908	23,363	28,004	104,311
March	5,332	6,698	11,564	38,162	27,002	34,153	122,911
<i>March quarter 1995</i>	14,695	18,222	31,689	103,454	74,230	88,016	330,306
ROOM OCCUPANCY RATES (per cent)							
<i>March quarter 1994</i>	57.3	63.1	55.7	64.1	67.0	76.6	66.2
<i>1995—</i>							
January	54.0	59.5	54.0	61.4	63.6	66.8	61.8
February	55.9	63.2	57.5	69.1	69.0	80.1	69.2
March	59.5	67.7	60.9	72.4	72.0	88.2	73.7
<i>March quarter 1995</i>	56.5	63.5	57.4	67.6	68.2	78.3	68.2
GUEST NIGHTS							
<i>March quarter 1994</i>	27,357	30,624	60,493	189,343	141,836	140,269	589,922
<i>1995</i>							
January	8,734	10,770	21,083	66,054	51,987	48,264	206,892
February	7,957	9,717	18,268	60,990	43,831	42,442	183,205
March	9,031	10,976	21,192	69,273	49,343	53,355	213,170
<i>March quarter 1995</i>	25,722	31,463	60,543	196,317	145,161	144,061	603,267
BED OCCUPANCY RATES (per cent)							
<i>March quarter 1994</i>	38.7	41.5	37.0	41.2	43.1	44.9	41.9
<i>1995—</i>							
January	37.9	39.7	38.9	41.4	45.3	44.8	42.5
February	38.2	39.6	37.3	42.3	42.3	43.6	41.7
March	39.2	40.4	39.1	43.4	43.0	49.5	43.8
<i>March quarter 1995</i>	38.4	39.9	38.5	42.4	43.6	46.0	42.7
GUEST ARRIVALS							
<i>March quarter 1994</i>	17,295	17,852	36,568	114,543	81,663	55,612	323,533
<i>1995—</i>							
January	5,426	6,546	12,639	41,589	32,014	17,187	115,401
February	4,722	5,641	10,906	36,248	27,135	18,435	103,087
March	5,669	6,662	12,882	43,926	31,325	21,145	121,609
<i>March quarter 1995</i>	15,817	18,849	36,427	121,763	90,474	56,767	340,097
AVERAGE LENGTH OF STAY (days)							
<i>March quarter 1994</i>	1.6	1.7	1.7	1.7	1.7	2.5	1.8
<i>March quarter 1995</i>	1.6	1.7	1.7	1.6	1.6	2.5	1.8
TAKINGS FROM ACCOMMODATION (\$'000)							
<i>March quarter 1994</i>	847	893	1,803	6,049	5,194	8,026	22,812
<i>1995—</i>							
January	273	319	634	2,136	2,025	2,583	7,971
February	265	305	555	2,108	1,805	2,675	7,713
March	301	347	656	2,409	2,153	3,413	9,279
<i>March quarter 1995</i>	839	971	1,846	6,654	5,982	8,671	24,963

TABLE 8—HOTELS, MOTELS AND GUEST HOUSES WITH FACILITIES BY STATISTICAL DIVISION,  
TASMANIA

Particulars	Greater Hobart (SD)			Southern (SD)			Northern (SD)		
	Licensed hotels with facilities	Motels and guest houses	Total	Licensed hotels with facilities	Motels and guest houses	Total	Licensed hotels with facilities	Motels and guest houses	Total
ESTABLISHMENTS, CAPACITY AND EMPLOYMENT									
<i>March quarter 1994—</i>									
Establishments	24	28	52	14	9	23	32	22	54
Guest rooms	1,214	651	1,865	471	98	569	1,093	452	1,545
Bed spaces	3,195	1,937	5,132	1,432	358	1,790	3,376	1,509	4,885
Employment (persons)	1,529	253	1,782	247	44	291	1,215	150	1,365
<i>March quarter 1995</i>									
Establishments	23	27	50	14	10	24	31	22	53
Guest rooms	1,221	650	1,871	476	136	612	1,091	420	1,511
Bed spaces	3,212	2,002	5,214	1,449	470	1,919	3,252	1,366	4,618
Employment (persons)	1,564	289	1,853	255	65	320	1,154	144	1,298
ROOM NIGHTS OCCUPIED									
<i>March quarter 1994</i>	83,828	44,113	127,941	23,984	5,348	29,332	62,381	25,016	87,397
<i>1995—</i>									
January	25,837	14,617	40,454	8,784	3,002	11,786	19,184	7,747	26,931
February	26,793	14,867	41,660	7,755	2,482	10,237	21,150	8,026	29,176
March	33,528	17,640	51,168	8,498	2,919	11,417	23,377	8,995	32,372
<i>March quarter 1995</i>	86,158	47,124	133,282	25,037	8,403	33,440	63,711	24,768	88,479
ROOM OCCUPANCY RATES (per cent)									
<i>March quarter 1994</i>	76.7	75.3	76.2	56.6	60.6	57.3	63.4	61.5	62.9
<i>1995—</i>									
January	68.3	72.5	69.7	59.5	71.2	62.1	56.7	59.5	57.5
February	78.4	81.7	79.5	58.2	65.2	59.7	69.2	68.2	69.0
March	88.6	87.5	88.2	57.6	69.2	60.2	69.1	69.1	69.1
<i>March quarter 1995</i>	78.4	80.6	79.2	58.4	68.7	60.7	64.9	65.5	65.1
GUEST NIGHTS									
<i>March quarter 1994</i>	147,820	84,837	232,657	50,742	12,124	62,866	106,954	50,057	157,011
<i>1995—</i>									
January	48,577	29,855	78,432	20,342	7,453	27,795	37,639	16,166	53,805
February	41,845	28,896	70,741	15,448	5,698	21,146	35,628	15,655	51,283
March	52,930	32,716	85,646	16,437	6,503	22,940	38,611	17,538	56,149
<i>March quarter 1995</i>	143,352	91,467	234,819	52,227	19,654	71,881	111,878	49,359	161,237
BED OCCUPANCY RATES (per cent)									
<i>March quarter 1994</i>	51.4	48.7	50.4	39.4	37.6	39.0	35.2	36.9	35.7
<i>1995—</i>									
January	48.8	48.1	48.5	45.3	51.2	46.7	37.3	38.2	37.6
February	46.5	51.5	48.5	38.1	43.3	39.4	39.1	40.9	39.7
March	53.2	52.7	53.0	36.6	44.6	38.6	38.3	41.4	39.2
<i>March quarter 1995</i>	49.6	50.8	50.0	40.0	46.5	41.6	38.2	40.1	38.8
GUEST ARRIVALS									
<i>March quarter 1994</i>	53,435	40,497	93,932	41,093	8,997	50,090	62,826	26,906	89,732
<i>1995—</i>									
January	17,585	14,114	31,699	16,522	5,015	21,537	20,608	9,359	29,967
February	17,443	11,971	29,414	12,185	3,785	15,970	20,565	8,852	29,417
March	20,055	15,617	35,672	14,187	4,374	18,561	23,138	9,995	33,133
<i>March quarter 1995</i>	55,083	41,702	96,785	42,894	13,174	56,068	64,311	28,206	92,517
AVERAGE LENGTH OF STAY (days)									
<i>March quarter 1994</i>	2.8	2.1	2.5	1.2	1.3	1.3	1.7	1.9	1.7
<i>March quarter 1995</i>	2.6	2.2	2.4	1.2	1.5	1.3	1.7	1.7	1.7
TAKINGS FROM ACCOMMODATION (\$'000)									
<i>March quarter 1994</i>	7,412	2,754	10,166	1,500	352	1,852	4,445	1,488	5,933
<i>1995—</i>									
January	2,468	958	3,426	593	246	839	1,459	485	1,944
February	2,427	942	3,369	460	215	675	1,533	492	2,026
March	3,202	1,162	4,365	498	232	730	1,700	540	2,240
<i>March quarter 1995</i>	8,097	3,063	11,160	1,551	693	2,244	4,693	1,518	6,211

TABLE 8 — HOTELS, MOTELS AND GUEST HOUSES WITH FACILITIES BY STATISTICAL DIVISION,  
TASMANIA—continued

Particulars	Mersey-Iyell (SD)			Total Tasmania		East Coast (a)	
	Licensed hotels with facilities	Motels and guest houses	Total	Licensed hotels with facilities	Motels and guest houses	Total	Total
ESTABLISHMENTS, CAPACITY AND EMPLOYMENT							
<i>March quarter 1994—</i>							
Establishments	22	27	49	92	86	178	14
Guest rooms	711	644	1,355	3,489	1,845	5,334	447
Bed spaces	1,990	1,861	3,851	9,993	5,665	15,658	1,428
Employment (persons)	596	307	903	3,587	754	4,341	238
<i>March quarter 1995—</i>							
Establishments	23	27	50	91	86	177	14
Guest rooms	723	663	1,386	3,511	1,869	5,380	465
Bed spaces	1,995	1,942	3,937	9,908	5,780	15,688	1,455
Employment (persons)	527	358	885	3,500	856	4,356	252
ROOM NIGHTS OCCUPIED							
<i>March quarter 1994</i>	35,738	37,617	73,355	205,931	112,094	318,025	21,790
<i>1995—</i>							
January	10,493	13,420	23,913	64,298	38,786	103,084	8,748
February	10,940	12,298	23,238	66,638	37,673	104,311	7,302
March	13,458	14,496	27,954	78,861	44,050	122,911	8,429
<i>March quarter 1995</i>	34,891	40,214	75,105	209,797	120,509	330,306	24,479
ROOM OCCUPANCY RATES (per cent)							
<i>March quarter 1994</i>	55.8	64.9	60.2	65.6	67.5	66.2	54.2
<i>1995—</i>							
January	46.8	65.3	55.7	59.1	66.9	61.8	60.7
February	54.0	66.2	59.9	67.8	72.0	69.2	56.1
March	60.0	70.5	65.1	72.5	76.0	73.7	58.5
<i>March quarter 1995</i>	53.6	67.4	60.2	66.4	71.6	68.2	58.5
GUEST NIGHTS							
<i>March quarter 1994</i>	65,191	72,197	137,388	370,707	219,215	589,922	46,463
<i>1995—</i>							
January	19,739	27,121	46,860	126,297	80,595	206,892	20,126
February	18,043	21,992	40,035	110,964	72,241	183,205	15,231
March	22,382	26,053	48,435	130,360	82,810	213,170	16,581
<i>March quarter 1995</i>	60,164	75,166	135,330	367,621	235,646	603,267	51,938
BED OCCUPANCY RATES (per cent)							
<i>March quarter 1994</i>	36.4	43.1	39.6	41.2	43.0	41.9	36.2
<i>1995—</i>							
January	31.9	45.0	38.4	41.1	45.0	42.5	44.6
February	32.3	40.4	36.3	40.0	44.6	41.7	37.4
March	36.2	43.3	39.7	42.4	46.2	43.8	36.8
<i>March quarter 1995</i>	33.5	43.0	38.2	41.2	45.3	42.7	39.7
GUEST ARRIVALS							
<i>March quarter 1994</i>	44,246	45,533	89,779	201,600	121,933	323,533	36,978
<i>1995—</i>							
January	13,966	18,232	32,198	68,681	46,720	115,401	15,640
February	12,995	15,291	28,286	63,188	39,899	103,087	11,457
March	15,668	18,575	34,243	73,048	48,561	121,609	13,303
<i>March quarter 1995</i>	42,629	52,098	94,727	204,917	135,180	340,097	40,400
AVERAGE LENGTH OF STAY (days)							
<i>March quarter 1994</i>	1.5	1.6	1.5	1.8	1.8	1.8	1.3
<i>March quarter 1995</i>	1.4	1.4	1.4	1.8	1.7	1.8	1.3
TAKINGS FROM ACCOMMODATION (\$'000)							
<i>March quarter 1994</i>	2,412	2,449	4,861	15,769	7,044	22,812	1,342
<i>1995—</i>							
January	801	961	1,762	5,321	2,650	7,971	623
February	798	845	1,643	5,218	2,494	7,713	473
March	958	986	1,944	6,359	2,920	9,279	543
<i>March quarter 1995</i>	2,557	2,791	5,348	16,898	8,064	24,963	1,639

(a) The East Coast Tourist Area comprises Glamorgan/Spring Bay (M) and Break O' Day (M).

TABLE 9 — HOTELS, MOTELS AND GUEST HOUSES WITH FACILITIES: STATISTICAL DIVISIONS

Statistical Divisions and selected Statistical Local Areas	Establish- ments	Guest rooms	Bed spaces	Employ- ment (persons)	Room nights occupied				Room occupancy rates (per cent)			
					Jan.	Feb.	Mar.	Mar. qtr	Jan.	Feb.	Mar.	Mar. qtr
					Clarence (C)	4	54	157	62	1,019	1,080	1,233
Glenorchy (C)	6	161	428	102	3,012	3,410	3,913	10,335	60.3	75.6	78.4	71.3
Hobart (C)												
Inner	6	432	1,084	173	8,278	9,754	11,854	29,886	61.8	80.6	88.5	76.9
Remainder	29	1,151	3,337	1,461	27,082	26,229	32,670	85,981	75.9	81.4	91.6	83.0
Total	35	1,583	4,421	1,634	35,360	35,983	44,524	115,867	72.1	81.2	90.7	81.3
Balance	5	73	208	55	1,063	1,187	1,498	3,748	47.0	58.1	66.2	57.0
Greater Hobart (SD)	50	1,871	5,214	1,853	40,454	41,660	51,168	133,282	69.7	79.5	88.2	79.2
Glamorgan/Spring Bay (M)	9	304	1,029	158	6,184	5,211	5,781	17,176	65.6	61.2	61.3	62.8
Tasman (M)	6	138	425	94	3,318	2,735	3,367	9,420	77.6	70.8	78.7	75.8
Balance	9	170	465	68	2,284	2,291	2,269	6,844	43.3	48.1	43.1	44.7
Southern (SD)	24	612	1,919	320	11,786	10,237	11,417	33,440	62.1	59.7	60.2	60.7
Break O' Day (M)	5	161	426	94	2,564	2,091	2,648	7,303	51.4	46.4	53.1	50.4
Launceston (C)												
Inner	10	472	1,336	368	8,735	10,118	11,498	30,351	59.7	76.6	78.6	71.4
Parts B & C	23	593	1,996	319	10,754	11,774	12,762	35,290	58.5	70.9	69.4	66.1
Total	33	1,065	3,332	687	19,489	21,892	24,260	65,641	59.0	73.4	73.5	68.5
Northern Midlands (M) — Pts A & B	3	25	65	19	422	418	516	1,356	54.5	59.7	66.6	60.3
Balance	12	260	795	498	4,456	4,775	4,948	14,179	55.3	65.6	61.4	60.6
Northern (SD)	53	1,511	4,618	1,298	26,931	29,176	32,372	88,479	57.5	69.0	69.1	65.1
Burnie (C) Pts A & B	8	230	555	135	3,703	3,655	4,460	11,818	51.9	56.8	62.6	57.1
Central Coast (M) Pts A & B	5	115	289	76	1,295	1,377	1,642	4,314	36.3	42.8	46.1	41.7
Circular Head (M)	3	94	239	84	1,758	1,848	2,313	5,919	60.3	70.2	79.4	70.0
Devonport (C)	8	238	689	128	3,582	3,718	3,989	11,289	48.5	55.8	54.1	52.7
Waratah/Wynyard (M) Pts A & B	8	131	359	78	1,706	1,607	2,125	5,438	42.0	43.8	52.3	46.1
West Coast (M)	11	419	1,214	240	8,240	7,456	9,257	24,953	63.4	63.6	71.3	66.2
Balance	7	159	592	144	3,629	3,577	4,168	11,374	73.6	80.3	84.6	79.5
Mersey-Lyell (SD)	50	1,386	3,937	885	23,913	23,238	27,954	75,105	55.7	59.9	65.1	60.2
Total Tasmania	177	5,380	15,688	4,356	103,084	104,311	122,911	330,306	61.8	69.2	73.7	68.2

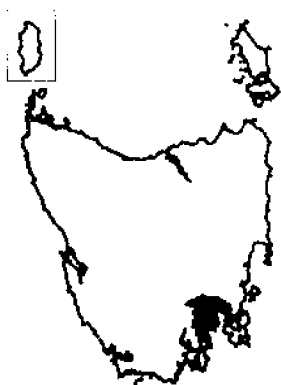
## AND SELECTED STATISTICAL LOCAL AREAS, TASMANIA, MARCH QUARTER 1995

<i>Guest nights</i>				<i>Guest arrivals</i>				<i>Takings from accommodation (\$'000)</i>			
<i>Jan.</i>	<i>Feb.</i>	<i>Mar.</i>	<i>Mar. qtr</i>	<i>Jan.</i>	<i>Feb.</i>	<i>Mar.</i>	<i>Mar. qtr</i>	<i>Jan.</i>	<i>Feb.</i>	<i>Mar.</i>	<i>Mar. qtr</i>
2,158	2,230	2,633	7,021	1,289	1,088	1,522	3,899	70	59	90	219
5,860	6,241	6,903	19,004	2,965	2,508	3,499	8,972	160	175	198	534
15,685	16,631	19,145	51,461	7,035	7,167	7,994	22,196	633	714	874	2,221
52,826	43,523	54,282	150,631	19,215	17,345	20,982	57,542	2,500	2,354	3,110	7,964
68,511	60,154	73,427	202,092	26,250	24,512	28,976	79,738	3,133	3,068	3,984	10,185
1,903	2,116	2,683	6,702	1,195	1,306	1,675	4,176	64	67	92	223
78,432	70,741	85,646	234,819	31,699	29,414	35,672	96,785	3,426	3,369	4,365	11,160
14,779	11,228	11,772	37,779	11,458	8,180	9,518	29,156	472	353	396	1,221
8,142	5,722	6,931	20,795	6,649	5,030	6,052	17,731	234	180	215	629
4,874	4,196	4,237	13,307	3,430	2,760	2,991	9,181	133	142	119	394
27,795	21,146	22,940	71,881	21,537	15,970	18,561	56,068	839	675	730	2,244
5,347	4,003	4,809	14,159	4,182	3,277	3,785	11,244	151	120	147	418
15,754	16,378	17,993	50,125	8,574	9,571	10,664	28,809	668	753	859	2,280
22,773	22,445	24,064	69,282	12,619	12,391	13,831	38,841	712	734	789	2,235
38,527	38,823	42,057	119,407	21,193	21,962	24,495	67,650	1,380	1,486	1,648	4,515
702	659	680	2,041	318	386	436	1,140	14	14	18	46
9,229	7,798	8,603	25,630	4,274	3,792	4,417	12,483	399	405	427	1,231
53,805	51,283	56,149	161,237	29,967	29,417	33,133	92,517	1,944	2,026	2,240	6,211
5,866	5,167	6,395	17,428	3,815	3,667	4,578	12,060	235	236	291	761
2,294	2,162	2,600	7,056	1,337	1,319	1,785	4,441	66	66	79	210
3,452	3,258	3,943	10,653	2,498	2,324	2,816	7,638	100	98	117	315
6,187	5,722	6,331	18,240	4,249	4,161	4,588	12,998	246	249	270	765
3,567	3,010	3,808	10,385	2,274	2,062	2,676	7,012	106	93	120	320
17,388	13,693	17,066	48,147	12,948	10,157	12,422	35,527	609	513	613	1,734
8,106	7,023	8,292	23,421	5,077	4,596	5,378	15,051	400	388	454	1,242
46,860	40,035	48,435	135,330	32,198	28,286	34,243	94,727	1,762	1,643	1,944	5,348
206,892	183,205	213,170	603,267	115,401	103,087	121,609	340,097	7,971	7,713	9,279	24,963

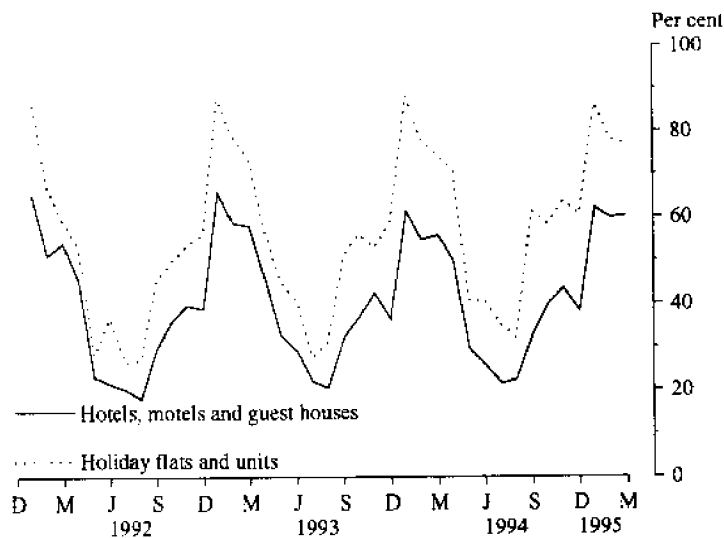
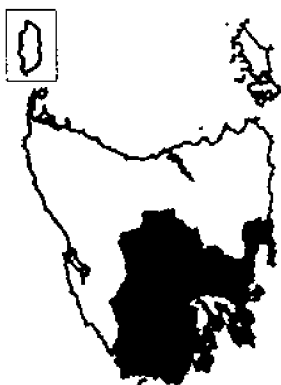
## MONTHLY ROOM/UNIT OCCUPANCY RATES

Graphs on these pages compare room occupancy rates for hotels, motels and guest houses with facilities with unit occupancy rates for holiday unit establishments for each Statistical Division and the East Coast Tourist area.

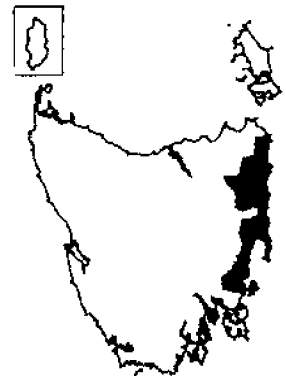
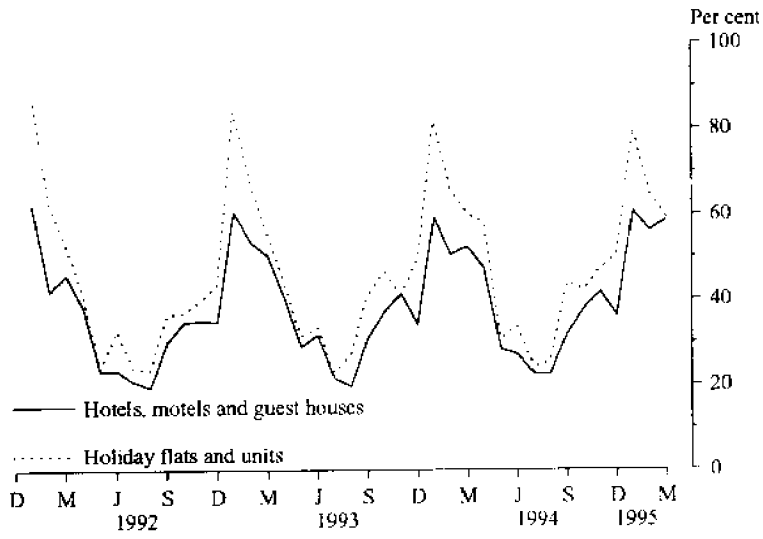
**GREATER HOBART STATISTICAL DIVISION**



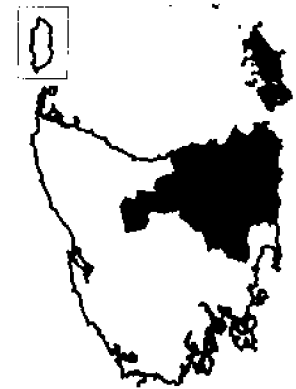
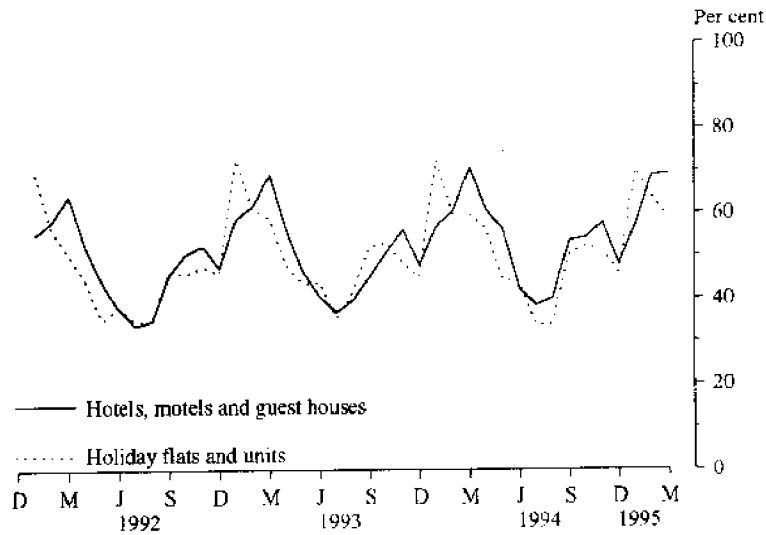
**SOUTHERN STATISTICAL DIVISION**



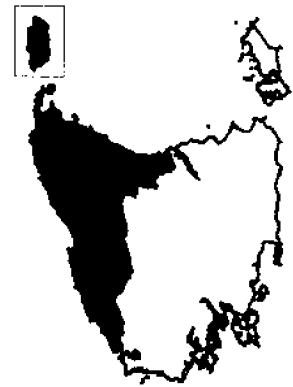
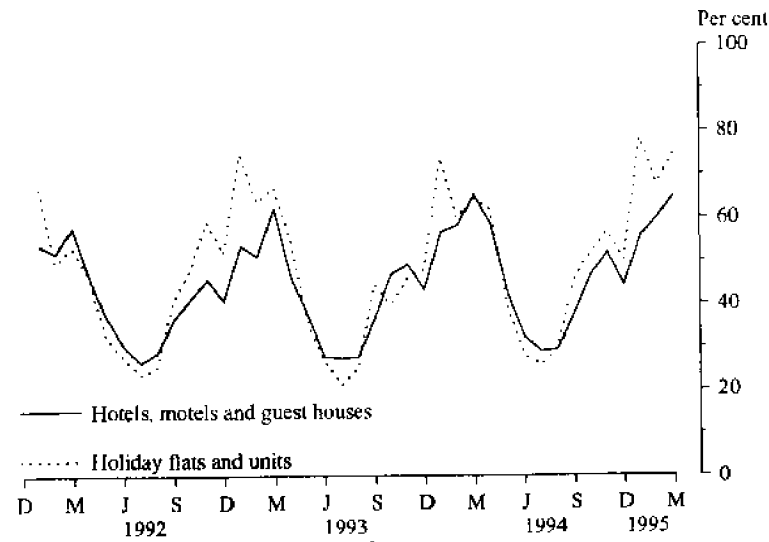
**EAST COAST TOURIST AREA**



**NORTHERN STATISTICAL DIVISION**



**MERSEY-LYELL STATISTICAL DIVISION**



**TABLE 10—HOLIDAY FLATS, UNITS AND HOUSES BY STATISTICAL DIVISION AND SELECTED STATISTICAL AREAS, TASMANIA**

Particulars	Northern (SD)					Total	Mersey-Lyell (SD)	Total Tasmania	East Coast (a)
	Greater Hobart (SD)	Southern (SD)	Greater Launceston and Central North (SSDs)	North Eastern (SSD)					
<b>LETTING ENTITIES, CAPACITY AND EMPLOYMENT</b>									
March quarter 1994— Letting entities	13	9	9	7	16	15	53	11	
Flats, units and houses									
Single bedroom	53	17	118	31	149	46	265	42	
Multiple bedroom	172	80	110	70	180	100	532	94	
<i>Total flats, units and houses</i>	<i>225</i>	<i>97</i>	<i>228</i>	<i>101</i>	<i>329</i>	<i>146</i>	<i>797</i>	<i>136</i>	
Bed spaces	979	502	864	501	1,365	665	3,511	632	
Employment (persons)	71	49	135	33	168	50	338	54	
March quarter 1995— Letting entities	13	9	31	7	18	15	55	11	
Flats, units and houses									
Single bedroom	55	21	124	30	154	42	272	41	
Multiple bedroom	179	81	140	71	211	124	595	95	
<i>Total flats, units and houses</i>	<i>234</i>	<i>102</i>	<i>264</i>	<i>101</i>	<i>365</i>	<i>166</i>	<i>867</i>	<i>136</i>	
Bed spaces	1,016	519	996	477	1,473	753	3,761	636	
Employment (persons)	76	47	165	33	198	61	382	52	
<b>UNIT NIGHTS OCCUPIED</b>									
March quarter 1994	15,563	7,000	13,714	5,282	18,996	8,721	50,280	8,492	
1995—									
January	5,726	2,726	5,467	2,466	7,933	4,025	20,410	3,359	
February	5,126	2,231	4,952	1,558	6,510	3,159	17,026	2,477	
March	6,393	2,433	5,314	1,329	6,643	3,847	19,316	2,490	
March quarter 1995	17,245	7,390	15,733	5,353	21,086	11,031	56,752	8,326	
<b>UNIT OCCUPANCY RATES (per cent)</b>									
March quarter 1994	76.9	80.2	66.8	58.1	64.2	66.4	70.1	69.4	
1995—									
January	78.9	86.2	66.8	78.8	70.1	78.2	75.9	79.7	
February	78.2	78.1	67.0	55.1	63.7	68.0	70.1	65.0	
March	88.1	76.9	64.9	42.4	58.7	74.8	71.9	59.1	
March quarter 1995	81.9	80.5	66.2	58.9	64.2	73.8	72.7	68.0	
<b>UNIT LETTINGS</b>									
March quarter 1994	5,609	3,640	7,277	2,294	9,571	4,487	23,307	3,830	
1995—									
January	1,919	1,477	2,782	955	3,737	1,950	9,083	1,454	
February	1,419	1,364	2,322	673	2,995	1,727	7,505	1,283	
March	2,279	1,713	2,765	708	3,473	2,124	9,589	1,570	
March quarter 1995	5,617	4,554	7,869	2,336	10,205	5,801	26,177	4,307	
<b>AVERAGE LENGTH OF STAY (days)</b>									
March quarter 1994	2.8	1.9	1.9	2.3	2.0	1.9	2.2	2.2	
1995—									
January	3.0	1.8	2.0	2.6	2.1	2.1	2.2	2.3	
February	3.6	1.6	2.1	2.3	2.2	1.8	2.3	1.9	
March	2.8	1.4	1.9	1.9	1.9	1.8	2.0	1.6	
March quarter 1995	3.1	1.6	2.0	2.3	2.1	1.9	2.2	1.9	
<b>TAKINGS FROM ACCOMMODATION (\$'000)</b>									
March quarter 1994	1,155	635	1,087	288	1,375	561	3,725	675	
1995—									
January	495	273	489	135	624	257	1,649	282	
February	428	191	419	82	501	214	1,334	188	
March	509	199	389	67	457	244	1,408	179	
March quarter 1995	1,432	662	1,297	285	1,582	715	4,391	649	

(a) The East Coast Tourist Area comprises Glamorgan/Spring Bay (M) and Break O'Day (M).



TABLE 11 — CARAVAN PARKS BY STATISTICAL DIVISION AND SELECTED STATISTICAL AREAS, TASMANIA

Particulars	Northern (SD)					Total	Mersey-Lyell (SD)	Total Tasmania	East Coast (a)
	Greater Hobart (SD)	Southern (SD)	Greater Launceston and Central North (SSDs)	North Eastern (SSD)					
ESTABLISHMENTS, CAPACITY AND EMPLOYMENT									
March quarter 1994—									
Establishments	8	17	11	8	19	26	70	11	
Capacity									
On-site vans	79	66	52	26	78	181	404	63	
Other powered sites	319	772	491	499	990	1,381	3,462	648	
Unpowered sites	252	416	521	639	1,160	609	2,437	554	
Cabins, flats, etc.	62	103	62	18	80	167	412	60	
Total capacity	712	1,357	1,126	1,182	2,308	2,338	6,715	1,325	
Sites occupied by long-term guests	89	19	94	8	102	192	402	26	
Other sites permanently reserved	10	280	95	296	391	193	874	363	
Employment (persons)	32	62	36	20	56	77	227	39	
March quarter 1995—									
Establishments	8	18	12	8	20	29	75	11	
Capacity									
On-site vans	80	67	56	24	80	166	393	55	
Other powered sites	298	791	492	532	1,024	1,484	3,597	655	
Unpowered sites	266	382	557	549	1,106	654	2,408	525	
Cabins, flats, etc.	64	108	72	20	92	172	436	77	
Total capacity	708	1,348	1,177	1,125	2,302	2,476	6,834	1,312	
Sites occupied by long-term guests	102	27	85	8	93	248	470	30	
Other sites permanently reserved	7	339	103	294	397	295	1,038	359	
Employment (persons)	33	86	39	22	61	90	270	51	
SITE NIGHTS OCCUPIED									
March quarter 1994	24,318	51,159	30,952	36,454	67,406	77,346	220,229	50,375	
1995—									
January	9,228	24,043	10,626	14,885	25,511	37,548	96,330	21,381	
February	7,541	17,590	9,605	10,624	20,229	27,573	72,933	15,550	
March	7,705	18,086	10,532	10,424	20,956	25,334	72,081	16,068	
March quarter 1995	24,474	59,719	30,763	35,933	66,696	90,455	241,344	52,999	
SITE OCCUPANCY RATES (per cent)									
March quarter 1994	37.9	41.9	30.5	34.3	32.5	36.8	36.4	42.2	
1995—									
January	42.0	57.5	29.1	42.7	35.7	48.9	45.5	52.6	
February	38.0	46.6	29.1	33.7	31.4	39.8	38.1	42.3	
March	35.1	43.3	28.9	29.9	29.4	33.0	34.0	39.5	
March quarter 1995	38.4	49.2	29.0	35.5	32.2	40.6	39.2	44.9	
TAKINGS FROM ACCOMMODATION (\$'000)									
March quarter 1994	407	572	424	233	657	959	2,595	459	
1995—									
January	156	315	161	109	270	414	1,156	229	
February	153	228	129	63	193	313	887	168	
March	171	197	140	53	193	283	844	142	
March quarter 1995	480	740	431	225	656	1,010	2,886	539	

(a) The East Coast Tourist Area comprises Glamorgan/Spring Bay (M) and Break O'Day (M).

TABLE 12—VISITOR HOSTELS BY STATISTICAL DIVISION, TASMANIA

Particulars	Greater Hobart (SD)	Southern (SD)	Greater Hobart (SD) and Southern (SD)	Northern (SD)	Mersey-Lyell (SD)	Total Tasmania
ESTABLISHMENTS, CAPACITY AND EMPLOYMENT						
March quarter 1994 —						
Establishments	5	14	19	10	10	39
Bed spaces	n.p.	n.p.	629	308	550	1,487
Employment (persons)	n.p.	n.p.	59	17	32	108
March quarter 1995—						
Establishments	8	16	24	10	9	43
Bed spaces	444	435	879	305	602	1,786
Employment (persons)	43	28	71	18	26	115
GUEST NIGHTS						
March quarter 1994	n.p.	n.p.	19,864	5,786	10,056	35,706
1995—						
January	6,708	5,776	12,484	2,006	4,642	19,132
February	5,332	3,709	9,041	1,661	3,119	13,821
March	4,784	3,877	8,661	1,501	3,491	13,653
March quarter 1995	16,824	13,362	30,186	5,168	11,252	46,606
BED OCCUPANCY RATES (per cent)						
March quarter 1994	n.p.	n.p.	35.1	20.9	20.3	26.7
1995—						
January	48.7	42.8	45.8	21.2	24.9	34.6
February	42.9	30.5	36.7	19.4	18.5	27.6
March	34.8	28.8	31.8	15.9	18.7	24.7
March quarter 1995	42.1	34.1	38.2	18.8	20.8	29.0
GUEST ARRIVALS						
March quarter 1994	n.p.	n.p.	13,634	4,083	7,275	24,992
1995—						
January	3,432	3,862	7,294	1,574	3,011	11,879
February	2,635	2,520	5,155	1,308	2,017	8,480
March	2,331	2,447	4,778	1,085	2,106	7,969
March quarter 1995	8,398	8,829	17,227	3,967	7,134	28,328
AVERAGE LENGTH OF STAY (days)						
March quarter 1994	n.p.	n.p.	1.5	1.4	1.4	1.4
1995—						
January	2.0	1.5	1.7	1.3	1.5	1.6
February	2.0	1.5	1.8	1.3	1.5	1.6
March	2.1	1.6	1.8	1.4	1.7	1.7
March quarter 1995	2.0	1.5	1.8	1.3	1.6	1.6
TAKINGS FROM ACCOMMODATION (\$'000)						
March quarter 1994	n.p.	n.p.	240	54	112	406
1995—						
January	83	65	148	20	50	218
February	66	41	107	17	41	165
March	61	44	105	15	44	164
March quarter 1995	210	149	359	52	135	547

TABLE 13. PASSENGER ARRIVALS AND DEPARTURES, TASMANIA,  
INTERSTATE AND INTERNATIONAL (a)(d)  
(Source: Tourism, Sport & Recreation)

Period	Arrivals			Total	Total Departures (b)	Cruise Ships (c)	
	By air		By sea			Arrivals	Departures
	Interstate	International					
1987	526,517	9,446	88,343	624,306	626,297	7,398	6,745
1988	571,344	8,625	101,572	681,541	683,635	5,497	6,161
1989	449,481	8,489	118,646	576,616	591,152	4,149	4,149
1990	555,631	8,629	120,004	684,264	679,833	3,255	3,255
1991	625,366	5,897	131,375	762,638	764,731	6,720	6,663
1992	652,092	4,428	114,969	771,489	761,109	4,608	4,608
1993	694,244	5,144	115,381	814,769	814,835	2,033	2,033
1994	745,508	4,166	128,644	878,318	880,936	6,592	6,592
1993-							
January	71,801	513	15,475	87,789	107,018	150	150
February	60,624	656	12,278	73,558	65,492	697	697
March	57,002	449	13,040	70,491	73,559	586	586
April	62,846	340	12,083	75,269	80,402	-	-
May	45,373	451	5,741	51,565	61,725	-	-
June	51,154	258	6,067	57,479	54,776	-	-
July	45,868	523	4,855	51,246	53,956	-	-
August	45,988	357	4,553	50,898	55,644	-	-
September	62,578	379	9,415	72,372	58,126	-	-
October	57,362	434	7,965	65,761	65,042	-	-
November	59,592	393	8,561	68,546	66,733	-	-
December	74,056	391	15,348	89,795	72,362	600	600
1994-							
January	73,470	473	12,536	86,479	103,610	1,596	1,596
February	63,506	413	12,324	76,243	69,690	2,470	2,470
March	66,848	414	13,054	80,316	85,030	1,064	1,064
April	62,519	502	11,732	74,753	78,095	-	-
May	50,076	242	8,151	58,469	70,924	-	-
June	52,737	167	7,629	60,533	56,244	-	-
July	52,995	186	6,983	60,164	63,737	-	-
August	50,447	250	7,199	57,896	61,996	-	-
September	69,099	340	13,430	82,869	66,659	-	-
October	61,361	422	11,466	73,249	71,846	980	980
November	63,701	338	10,707	74,746	73,918	482	482
December	78,749	419	13,433	92,601	79,187	-	-
1995-							
January	80,818	318	12,430	93,566	115,126	1,368	1,368
February	78,700	269	11,704	90,673	81,727	1,772	1,772
March	68,790	351	13,087	82,228	86,348	659	659

- (a) The following persons are not included in these statistics : passengers under three years of age accompanied by an adult ; passengers travelling on chartered flights with minor carriers ; passengers travelling on private or VIP flights.
- (b) The proportion of departing passengers who were visitors was shown to be about 58 per cent in the 1981 Tasmanian Visitor Survey, around 55 per cent in the 1984 TVS, about 53 per cent in the 1986 TVS, nearly 60 per cent in the 1988 TVS, close to 65 per cent in the 1990 TVS, almost 58 per cent in the 1991 TVS, almost 55 per cent in the 1992 TVS, and just over 58 per cent in the 1993 TVS.
- (c) Cruise ship statistics were not collected before November 1986 and are not included in Total Arrivals and Total Departures.
- (d) The domestic airline pilots dispute commenced on 18 August 1989 with the pilots working restricted hours (9 a.m. to 5 p.m.). The pilots were suspended on 23 August 1989.

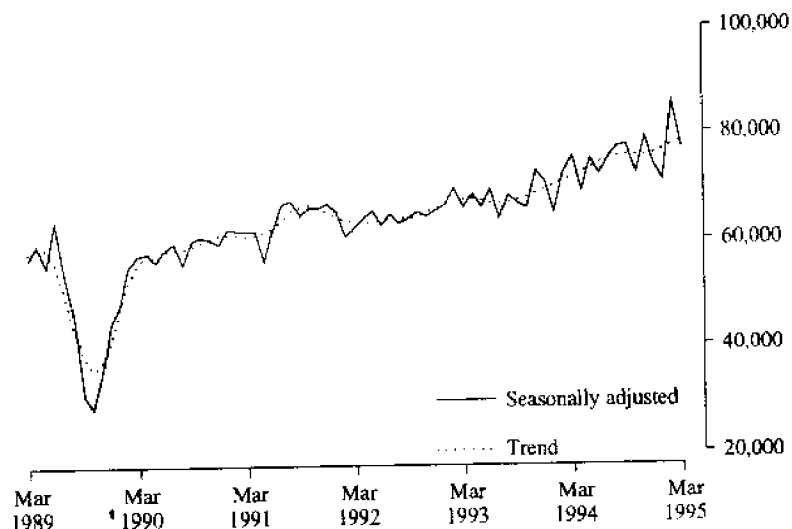
TABLE 14. TOTAL PASSENGER ARRIVALS BY AIR AND SEA INTO TASMANIA :  
SEASONALLY ADJUSTED AND TREND SERIES (a)(b)

Period	Original	Seasonally adjusted (a)	Trend
December 1987	63,187	52,082	53,429
1988	68,809	57,058	56,003
1989	53,613	44,471	41,098
1990	73,421	59,307	60,865
1991	83,162	66,847	65,082
1992	82,262	65,418	65,953
1993	89,795	70,896	69,538
1994	92,601	73,654	75,796
1993-			
January	87,789	66,589	66,714
February	73,558	69,583	67,313
March	70,491	66,074	67,607
April	75,269	68,587	67,637
May	51,565	66,034	67,322
June	57,479	69,510	66,870
July	51,246	63,895	66,753
August	50,898	68,231	66,987
September	72,372	66,639	67,385
October	65,761	65,813	67,991
November	68,546	72,648	68,740
December	89,795	70,896	69,538
1994-			
January	86,479	65,011	70,304
February	76,243	72,066	70,934
March	80,316	75,487	71,588
April	74,753	68,991	72,405
May	58,469	75,071	73,318
June	60,533	72,090	74,263
July	60,164	75,220	75,087
August	57,896	77,208	75,487
September	82,869	77,430	75,652
October	73,249	72,248	75,609
November	74,746	79,140	75,647
December	92,601	73,654	76,024
1995-			
January	93,566	71,017	76,727
February	90,673	85,673	77,576
March	82,228	77,026	78,476

(a) There is an annual recalculation of seasonal adjustment factors to include the most recent year's arrivals. This occurs at the end of each financial year and may cause revisions to previously-published seasonally-adjusted and trend figures, as can be seen in Table 14. A full printout of seasonally-adjusted and trend series figures dating back to 1971 can be obtained through the publication officer for this publication (Eddie Oakford).

(b) The domestic airline dispute commenced on 18 August 1989 with the pilots working restricted hours (9 a.m. to 5 p.m.). The pilots were suspended on 23 August 1989.

TOTAL ARRIVALS IN TASMANIA



Source: Dept. of Tourism, Sport & Recreation

## EXPLANATORY NOTES

\*\*\*\*\*

### INTRODUCTION

**1** This publication contains data for Tasmania from a quarterly survey of tourist accommodation establishments. The period covered by the latest survey is the 3 months ended 31 March 1995.

### SCOPE

**2** Tourist accommodation establishments currently included in the survey comprise two groups:

- Establishments which provide predominantly short-term accommodation (i.e. for periods of less than 2 months) to the general public. These include:

*Hotels, motels and guest houses, with facilities* being hotels licensed to operate a public bar and motels, private hotels and guest houses all of which provide a bath (or shower) and toilet in most guest rooms and have breakfast available for guests.

NOTE: From December quarter 1993, hotel, motel and guest house establishments with fewer than five rooms have been formally excluded from the scope of this statistical collection. This change in scope resulted in the exclusion of 13 establishments which in the September quarter 1993 Survey aggregates for Tasmania represented 6.8 per cent of hotel, motel and guest house establishments but accounted for only 0.7 per cent or less of accommodation capacity, occupancy and takings respectively.

*Holiday flats, units and houses* (excluding establishments predominantly operated on a time share basis) which are operated by owners or managers who have sole letting rights to at least five flats, units or houses or by real estate agents for short-term letting. They are mainly self-contained in terms of cooking, bath (or shower) and toilet facilities and do not have breakfast available for guests. Data for holiday flats, units and houses include short-term owner occupation as well as paying guest occupation.

*Visitor hostels* which provide accommodation to visitors on a bed basis (rather than by the room). This category does not include establishments providing charity type accommodation (e.g. Salvation Army hostels) nor hotels, motels and guest houses without in-room facilities which provide accommodation on a per room basis.

- *Caravan parks* which provide either predominantly short-term (i.e. for periods of less than 2 months) or predominantly long-term (i.e. for periods of 2 months or more) accommodation to the general public and which provide powered sites for caravans and toilet, shower and laundry facilities for guests.

**3** Data collected and published for each type of establishment (other than holiday flats, units and houses) include both long-term and short-term guests at these establishments.

**4** Establishments which provide more than one type of accommodation (e.g. a motel with attached caravan park) are treated as two or more separate establishments. However, self-contained units, flats, cabins, etc. attached to hotels, motels or to caravan parks are included in the capacity for those establishments and not treated as separate holiday flat, unit or house establishments.

### DEFINITIONS

**5** *Number of establishments.* For hotels, motels and guest houses, caravan parks and visitor hostels, the number of establishments within the scope of the survey which operated for any part of the survey period, or which closed temporarily for the quarter for seasonal reasons.

**6** *Number of letting entities.* For holiday flats, units and houses, the number of owners, managers or real estate agents within the scope of the survey who operated for any part of the survey period.

**7** Capacity in terms of *Guest rooms, Bed spaces, Holiday units* or *Caravan park sites, etc.* is the maximum number available to accommodate paying guests during the survey period. Capacity closed temporarily for seasonal reasons is included.

**8** *Bed spaces.* Three-quarter beds are counted as one bed space; double beds as two bed spaces. Cots are excluded.

**9** *Total caravan park capacity* comprises *On-site vans, Other powered sites, Unpowered sites* and *Cabins, etc.*

\*\*\*\*\*

## EXPLANATORY NOTES—continued

## DEFINITIONS — continued

**10** *Room nights available.* The number of guest rooms available multiplied by the number of days for which they were available during the survey period. Includes operating periods only for establishments closing (other than for seasonal reasons) or opening during the survey period.

**11** Occupancy in terms of *Room nights, Unit nights or Site nights occupied* refers to the total number of nights each guest room, holiday unit or caravan park site, etc. was occupied during the survey period.

NOTE: From September quarter 1992, caravan park sites, etc. permanently reserved for 2 months or more at the end of the survey period but only casually occupied by their tenants have been recorded continuously as *Site nights occupied* irrespective of whether the tenants of individual sites were in residence on any particular night. (See also paragraph 14 below). Previously, usage of these sites was recorded as *Site nights occupied* only when their tenants were in the park. Total site occupancy rates from September quarter 1992 are therefore not comparable with those from previous quarters.

**12** Occupancy in terms of *Guest nights* refers to the total number of nights each paying guest stayed during the survey period.

**13** *Sites occupied by long-term guests.* The total number of sites, etc. occupied at the end of the survey period by guests who have stayed continuously for 2 months or more.

**14** *Other sites permanently reserved.* The total number of powered and unpowered sites, on-site vans and cabins, etc. continuously let for 2 months or more by the end of the survey period to tenants who occupy the sites only on a casual or sporadic basis. Separate data for this item are available only from September quarter 1992.

**15** *Occupancy rates* represent occupancy expressed as a percentage of total capacity available during the survey period — e.g.

$$\text{Room occupancy rate (\%)} \text{ for the period} = \frac{\text{Room nights occupied}}{(\text{Guest rooms}) \times (\text{No. of days in the period})} \times 100$$

providing that, for establishments closing (other than for seasonal reasons) or opening during the period, the denominator of the above expression includes only operating periods.

**16** *Guest arrivals.* The total number of paying guests counted only on the first night they stayed at the accommodation establishment.

**17** *Unit lettings.* The total number of times a holiday flat, unit or house was occupied by a new tenant, counted only on the first night it was occupied by the new tenant.

**18** *Average length of stay* is expressed in number of days and calculated:

- for hotels, motels and guest houses and for visitor hostels, by dividing *Guest nights* by *Guest arrivals* and
- for holiday flats, units and houses, by dividing *Unit nights occupied* by *Unit lettings*.

**19** *Takings from accommodation.* Revenue received from the provision of accommodation. Takings from meals are excluded. Takings from accommodation for each month generally represent the takings received during that month. Where payments are received in advance of, or after, the provision of accommodation to guests, the monthly figure for takings from accommodation may not necessarily bear a direct relationship to the number of guests accommodated during the month. Rental and storage fees paid to caravan parks for the keeping of private vans in parks are included in the takings of the month they are received.

**20** *Star grading.* The grading of hotels and motels with facilities based on the classification system used by members of the Australian Automobile Association (AAA). The gradings are allocated according to a points system based on the amenities and facilities available to guests. Details of the grading scheme are contained in the RACV-RAASA members' publication *Accommodation Australia*, or the individual tour guides produced by members of the AAA. For the purpose of classifying establishments to a star

EXPLANATORY NOTES—*continued*

\*\*\*\*\*

DEFINITIONS—*continued*

grading in this publication, 'half' star gradings are ignored (e.g. a two and a half star grading has been shown as two star).

**21** *Employment.* The number of persons working at accommodation establishments at the end of the survey period (including working proprietors and those working on other than accommodation activities).

AUSTRALIAN STANDARD  
GEOGRAPHICAL  
CLASSIFICATION

**22** Statistics presented in this publication have been classified according to the Australian Standard Geographical Classification (ASGC), Edition 2.4. This classification incorporates a number of hierarchic structures of geographic areas. The appropriate spatial units of the main structure of the ASGC used in this publication are:

*Statistical Local Areas (SLAs)*, which are legal Local Government Areas or parts thereof, which serve as the smallest type of spatial unit considered appropriate for the presentation of statistics and which add, without gaps or overlaps, to;

*Statistical Subdivisions (SSDs)* which in turn represent another, higher hierarchic level and add, without gaps or overlaps, to;

*Statistical Divisions (SDs)* which in turn add, without gaps or overlaps, to;

*Total Tasmania.*

For more detailed information, refer to the ASGC (1216.0).

## UNPUBLISHED STATISTICS

**23** The ABS may make available on request certain unpublished tourist accommodation statistics. A charge may be made for this information.

## RELATED PUBLICATIONS

**24** Publications for Australia, and each State and Territory, are released by the respective offices of the ABS. Tourist accommodation statistics for past quarters are available on request.

**25** Other ABS publications which may be of interest include:

*Directory of Tourism Statistics* (1130.0) (irregular; first and latest issue: 1991)

*Overseas Arrivals and Departures, Australia* (3401.0) (monthly)

*Tourism Indicators Australia* (8634.0) (quarterly)

*Tourist Accommodation, Australia* (8635.0) (quarterly)

**26** Current publications produced by the ABS are listed in the *Catalogue of Publications and Products* (1101.0). The ABS also issues the *Publications Advice* (1105.0) on Tuesdays and Fridays which lists publications to be released in the next few days. Both the *Catalogue* and *Publications Advice* are available from any ABS office.

SYMBOLS AND  
OTHER USAGES

n.a. not available

n.p. not available for publication but included in totals where applicable

r figure or series revised since previous issue

.. not applicable

— nil or rounded to zero

— break in continuity of the series (where drawn across a column between two consecutive figures)

**27** Where figures have been rounded, discrepancies may occur between totals and the sums of the component items.

**William P. McReynolds**  
Deputy Commonwealth Statistician and  
Government Statistician of Tasmania



## For more information ...

The ABS publishes a wide range of statistics and other information on Australia's economic and social conditions. Details of what is available in various publications and other products can be found in the *ABS Catalogue of Publications and Products* available at all ABS Offices (see below for contact details).

### Information Consultancy Service

Information tailored to special needs of clients can be obtained from the Information Consultancy Service available at ABS Offices (see Information Inquiries below for contact details).

### National Dial-a-Statistic Line

0055 86 400

(Steadycom P/L, premium rate 25c/21.4 secs.)

This number gives 24-hour access, 365 days a year, for a range of statistics.

### Electronic Data Services

A large range of data is available via on-line services, diskette, magnetic tape, tape cartridge and CD ROM. For more details about these electronic data services, contact any ABS Office (see below).

### Bookshops and Subscriptions

There is a large number of ABS publications available from ABS bookshops (see below Bookshop Sales for contact details). The ABS also provides a subscription service through which nominated publications are supplied by mail on a regular basis (telephone Subscription Service toll free on 008 02 0608 Australia wide).

## Sales and Inquiries

Regional Offices	Information Inquiries	Bookshop Sales
SYDNEY (02)	268 4611	268 4620
MELBOURNE (03)	615 7000	615 7829
BRISBANE (07)	222 6351	222 6350
PERTH (09)	360 5140	360 5307
ADELAIDE (08)	237 7100	237 7582
HOBART (002)	20 5800	20 5800
CANBERRA (06)	207 0326	207 0326
DARWIN (089)	43 2111	43 2111
<b>National Office</b>		
ACT (06)	252 6007	008 020 608

### ABS Email Addresses

Keylink	STAT.INFO/ABS
X.400	(C:AU,A:TELMEMO,O:ABS,SN:INFO,FN:STAT)
Internet	STAT.INFO@ABS. TELEMEMO.AU



Information Services, ABS, PO Box 10, Belconnen ACT 2616

